

2026-2027 Auditions: Cello



Thank you for your interest in the MSYO. The following is a list of audition requirements. Please do not let this list worry you about your audition. You may not be able to play all of the requested material. The conductor and audition judges expect this. If you are willing to make MSYO a commitment and you are interested in performing with us, please audition.

Audition Date: Thursday, August 6, 2026

Audition Location: Larkins Music Center, 257 Dauphin Street, Mobile, AL 36602

PRIOR TO THE AUDITION DATE, YOU MUST CALL 251-432-2010 TO SCHEDULE AN AUDITION TIME.

Please prepare the following:

1. Major Scales

2 Octaves - The judges will select two Major Keys

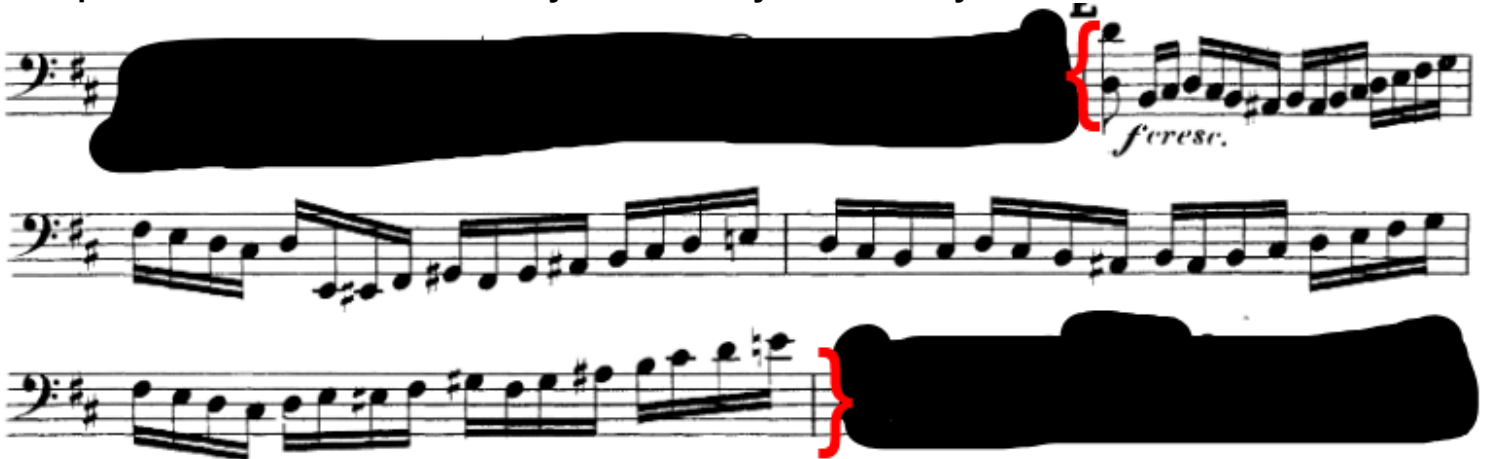
2. A Solo of your choice from the standard repertoire for your instrument.

A concerto, concert piece, or sonata is strongly recommended.

3. Excerpts (Listed Below)

You should prepare these excerpts to the best of your ability. The tempo indications are only suggestions. While you may not be able to play at the indicated tempo, you are expected to make a reasonable effort to perform each excerpt. It is strongly recommended that you consult your private teacher in your preparation and that you listen to these excerpts on YouTube.

Excerpt 1: Romeo and Juliet “Fantasy Overture” by Tchaikovsky



Excerpt 2: Romeo and Juliet "Fantasy Overture" by Tchaikovsky

Musical score for Excerpt 2: Romeo and Juliet "Fantasy Overture" by Tchaikovsky. The score consists of two staves in bass clef with a key signature of one sharp (F#). The first staff begins with a dynamic marking of **F** and a red bracket. The second staff features a red bracket and a blacked-out section.

Excerpt 3: Romeo and Juliet "Fantasy Overture" by Tchaikovsky
Violoncello.

Musical score for Excerpt 3: Romeo and Juliet "Fantasy Overture" by Tchaikovsky, Violoncello. The score consists of four staves in bass clef with a key signature of one sharp (F#). The first staff has a blacked-out section and a red bracket. The second and third staves have dynamic markings of **f** and *cresc.* respectively. The fourth staff has a red bracket and a blacked-out section.

Excerpt 4: Festive Overture by Shostakovich

Musical score for Excerpt 4: Festive Overture by Shostakovich. The score consists of four staves in bass clef with a key signature of one sharp (F#). The first staff has a blacked-out section and a red bracket. The second and third staves have dynamic markings of *cresc.* and **ff** respectively. The fourth staff has a red bracket and a blacked-out section. Measure numbers 97, 105, 114, and 122 are indicated.